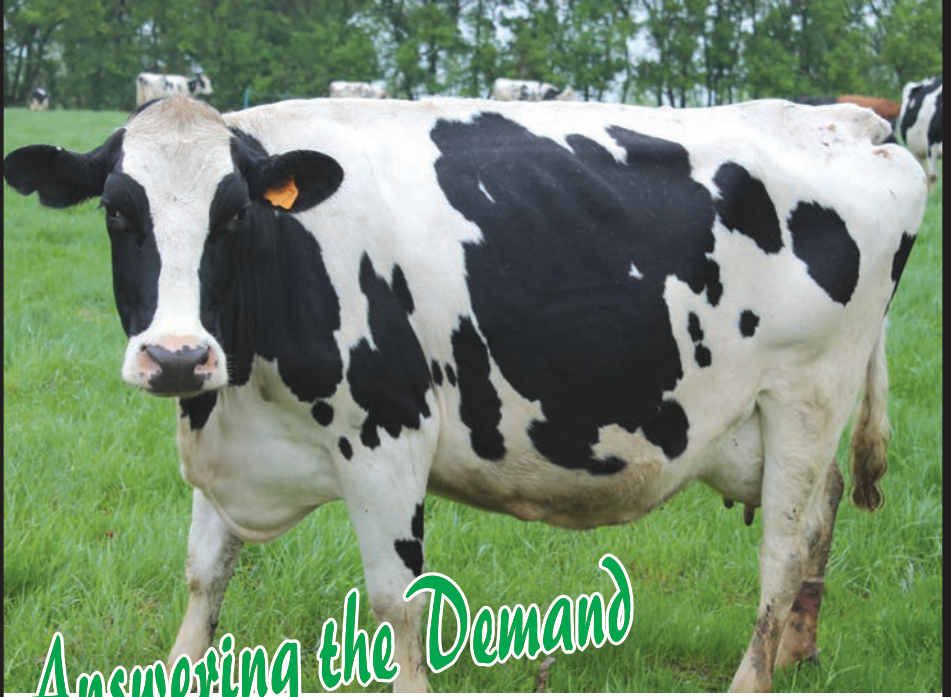


SUPERGRO

OF IOWA, LLC



Answering the Demand

for

Better Health and Longevity

Better Performance and Reproduction

Through

Better Nutrition

with

Superior Livestock Nutritional Supplements

877-261-1258

THE NEED: VITAMIN/MINERAL SUPPLEMENTATION HAS BECOME A MUST IN THE LIVESTOCK INDUSTRY FOR A NUMBER OF REASONS. INCLUDING AMONG THESE REASONS ARE THE IMPROVED GENETICS, INCREASED PERFORMANCE EXPECTATIONS, CONFINEMENT HOUSING, WEATHER, MOLDS, FEED QUALITY AND AVAILABILITY.

TWENTY SIX MINERAL ELEMENTS ARE KNOWN TO BE REQUIRED BY AT LEAST SOME ANIMAL SPECIES. THEY INCLUDE THE FOLLOWING.

MAJOR ELEMENTS

CALCIUM	ARSENIC
PHOSPHORUS	BORON
POTASSIUM	CADMIUM
MAGNESIUM	CHROMIUM
SODIUM	COBALT
SULFUR	COPPER
CHLORINE	FLOURINE

TRACE OR MICROMINERALS

IODINE	NICKEL
IRON	SELENIUM
LEAD	SILICON
LITHIUM	TIN
MANGANESE	VANDIUM
MOLYBDENIUM	ZINC

PRODUCT INFORMATION:

ALL SUPPLEMENTS CONTAIN CALCIUM AND PHOSPHURUS IN VARIOUS RATIOS DESIGNED TO BE USED AS PER THE PRODUCTION REQUIREMENTS OF THE ANIMAL AND ITS FEED COMPOSITION. INDIVIDUALLY OR COMBINED, THEY HAVE TO DO WITH SKELETAL STRUCTURE, MILK PRODUCTION, BREEDING, CLEANING, ENERGY, ETC.

ALL SUPPLEMENTS CONTAIN THE OTHER MAJOR MINERALS OF MAGNESIUM, SULFUR AND POTASSIUM. INDIVIDUALLY OR COMBINED THEY HAVE TO DO WITH MILK PRODUCTION, BUTTERFAT PRODUCTION, NERVOUSNESS, WATERY EYES DIARRHEA, POOR ENERGY METABOLISM, "GRASS TETANY" ETC.

ALL SUPPLEMENTS CONTAIN THE TRACE MINERALS IRON, ZINC, COPPER, COBALT AND MANGANESE IN A CHELATED FORM AS WELL AS AN INORGANIC FORM. TYPICALLY CHELATES HAVE BEEN SHOWN TO BE THE MOST EFFECTIVE IN BEING ABSORBED INTO THE BLOODSTREAM ASSURING EXCELLENT AVAILABILITY OF THESE ELEMENTS. INDIVIDUALLY OR COMBINED THESE ELEMENTS HAVE TO DO WITH BREEDING, ANEMIA, DISEASE RESISTANCE, IMMUNE SYSTEM RESPONSE, ENERGY PRODUCTION, HEAT FAILURE, MASTITIS, SCOURS, AND FOOT PROBLEMS, ETC.

OTHER TRACE MINERALS INCLUDED ARE IODINE AND SELENIUM. SALT IS INCLUDED IN SOME SUPPLEMENTS AS WELL, HOWEVER, NOT ALL AND ALWAYS AT LESS THAN 10%. THESE ELEMENTS, INDIVIDUALLY OR COMBINED AFFECT RETAINED PLACENTAS, REPRODUCTION, BONE FORMATION, MILK PRODUCTION, CELL OXIDATION RATE, METABOLIC RATE, FOOT PROBLEMS, SOLUBILITY OF PROTEIN, BLOOD NEUTRALITY, WHITE MUSCLE DISEASE, ETC.

ALL SUPPLEMENTS CONTAIN KELP MEAL AS A RICH SOURCE OF A WIDE SPECTRUM. NATURALLY CHELATED MINERAL BASE AS WELL AS A SOURCE OF NATURALLY OCCURRING VITAMINS AND AMINO ACIDS. KELP CONTAINS OVER 60 MINERALS, MORE THAN 12 VITAMINS, INCLUDING E, A, C, B12 AND THIAMIN; AND 21 AMINO ACIDS. IT HELPS INCREASE REGULARITY OF HEAT CYCLES, INCREASES THE NUMBER AND DURABILITY OF SPERM, IMPROVES CONCEPTION RATES AS WELL AS ASSISTS IN MORE EFFICIENT FEED UTILIZATION.

ALL SUPPLEMENTS CONTAIN PROBIOTICS. PROBIOTICS CONTAIN SPECIFIC STRAINS OF BACTERIA(LACTOBACILLUS, ACIDOPHILUS) WHICH WILL IMPLANT OR GROW IN THE INTESTINE PRODUCING LACTIC ACID TO HELP IN THE CONTROL OF PATHOGENIC ORGANISMS AND ASSIST WITH BETTER ABSORPTION OF NUTRIENTS. PROBIOTICS ARE NECESSARY WHEN ANTIBIOTICS HAVE BEEN USED. THE ANIMAL IS SICK OR RECOVERING FROM ALL ILLNESS AND/OR UNDER STRESS FOR VARIOUS REASONS SUCH AS HOT OR COLD WEATHER, CALVING WEANING, MUDDY LOTS.

ALL SUPPLEMENT CONTAIN THE MAJOR VITAMINS OF A, D AND E TO ASSURE ADEQUATE AVAILABILITY OF THESES VITAMINS

GENERAL DAIRY SUPPLEMENTS: GUARANTEED ANALYSIS

		MB31X	MB21X	MB11X	MBHPX
CALCIUM	MAX.	20.0 %	17.0 %	14.5 %	5.5 %
	MIN.	18.0 %	14.5 %	12.25 %	4.5 %
PHOSPHORUS	MIN.	6.0 %	8.0 %	12.1 %	15.5 %
MAGNESIUM	MIN.	4.0 %	6.0 %	6.0 %	4.0 %
SULFUR	MIN.	2.0 %	2.0 %	2.0 %	2.0 %
POTASSIUM	MIN.	2.0 %	2.0 %	2.0 %	2.0 %
SALT	MAX.	2.0 %	2.0 %	0.75%	8.0 %
	MIN.	0.1 %	0.1 %	0.25 %	7.0 %
ZINC	MIN.		5000 PPM		
MANGANESE	MIN.		500 PPM		
COPPER	MIN.		1500 PPM		
COBALT	MIN.		30 PPM		
IODINE	MIN.		300 PPM		
SELENIUM	MAX.		15 PPM		
VITAMIN A	IU/lb		400,000		
VITAMIN D	IU/lb		125,000		
VITAMIN E	IU/lb		700		

FEEDING DIRECTIONS: DAIRY ORGANIC MINERAL MAY BE FED EITHER FREE CHOICE OR MIXED WITH OTHER FEED. WHEN FEEDING FREE CHOICE, A COVERED MINERAL FEEDER IS RECOMMENDED TO PROTECT THE MINERAL FROM THE WEATHER. CONSUMPTION WILL VARY WITH THE TYPE OF RATION BEING FED AND THE INDIVIDUAL APPETITES OF ANIMALS. WITH MOST FEEDING CONDITIONS, CONSUMPTION SHOULD BE APPROXIMATELY 4 TO 7 OUNCES PER HEAD DAILY. DO NOT EXCEED 7 OUNCES PER HEAD PER DAY TO STAY BELOW THE LEGAL MAXIMUM LEVEL OF SELENIUM. FREE CHOICE SALT AND FRESH , CLEAN WATER SHOULD BE AVAILABLE AT ALL TIMES.

CAUTION: LIVESTOCK FED A PHOSPHORUS-DEFICIENT RATION MAY OVER-CONSUME MINERALS WHEN THEY ARE FIRST OFFERED. DURING THE FIRST WEEK, LIMIT THE AMOUNT OF MINERAL TO THE MINIMUM AMOUNT ALLOWED IN THE FEEDING DIRECTION DAILY AND PREVENT INDIVIDUAL ANIMALS FROM MONOPOLIZING ACCESS TO THE FEEDER. FOLLOW LABEL DIRECTIONS. THE ADDITION TO FEED OF HIGHER LEVELS OF THIS PREMIX CONTAINING SELENIUM IS NOT PERMITTED. DO NOT FEED TO SHEEP.

NOTE: IT IS RECOMMENDED THAT THE PRODUCER MAKE USE OF THE FREE

COMPUTER RATION BALANCING SERVICE OFFERED TO USERS OF THESE SUPPLEMENTS.

Local Dealer:

Available for Other Livestock:

Beef
Poultry
Swine
Horse
Goat
Sheep



Phone: 877-261-1258
supersoil@pcfreesoil.com
12145 Providence Rd.
Brookville, OH 45309